

TYNE & WEAR
archives &
museums

Susan Aldworth: Reassembling the Self
Preview Invitation, Hatton Gallery

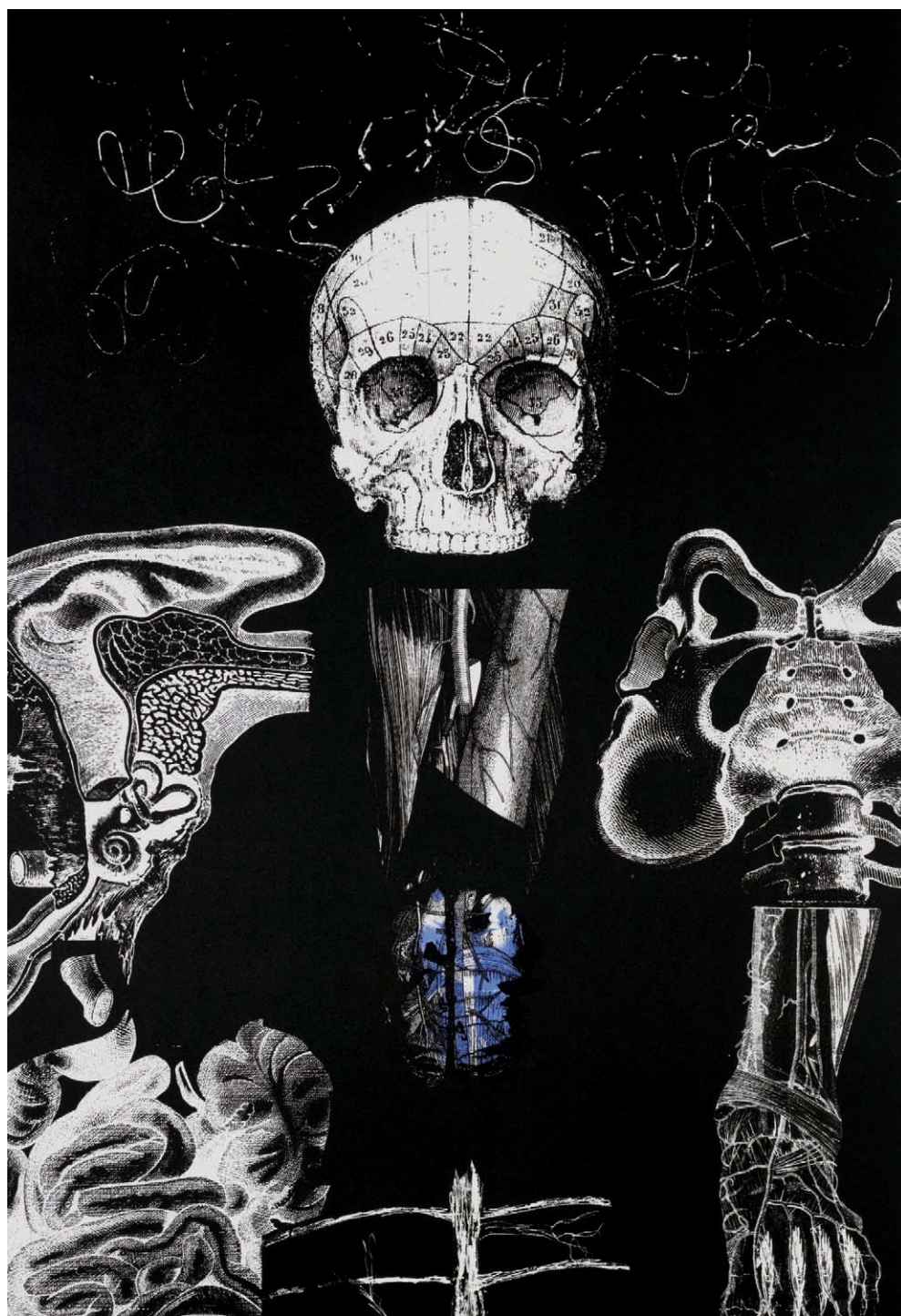


Image: Reassembling the Self 1 by Susan Aldworth, 2012

Thursday 20 September, 6-8pm,

We are delighted to invite you to the preview of Susan Aldworth: Reassembling the Self. Centred in a study of schizophrenia, the exhibition weaves together art, science, psychiatry and individual histories in an extraordinary exploration of self, perception and the fragility of human identity.



Please feel free to bring your family and friends and RSVP by Thursday 13 September to the Hatton Gallery by telephone: (0191) 222 6059 or email: info@hattongallery.org.uk

If you have any disability related access requirements please contact us in advance.

Refreshments will be available.

Acknowledgements to: The Barbour Foundation, Ridley Family Fund, Mental Health Foundation North East & The Lena Teague Foundation.

The exhibition will also be on show at Vane from 20 September - 20 October 2012.

Hatton Gallery

The Quadrangle, Newcastle University, Newcastle upon Tyne, NE1 7RU

Free entry

www.hattongallery.org.uk

Image Credit: Reassembling the Self 1 by Susan Aldworth 2012



Supported as part of public funding by
ARTS COUNCIL ENGLAND



The Barbour Foundation

Ridley Family Fund

Mental Health Foundation North East

The Lena Teague Foundation

Vane